



moduleo[®]

Design Floors

EN

INSTALLATION INSTRUCTIONS

INSTALLATION ADVICE FOR MODULEO® DESIGN

With these comprehensive instructions, we provide you with sufficient information to carry out a proper installation. The hints and instructions below must obviously be complemented with your craftsmanship and technical know-how. In any case, your complete attention and planning skills are required to install the product.



GENERAL PREPARATION

Acclimatisation

TIP Allow your Moduleo product to acclimatise by laying the strips on the floor to be covered, with the patterns upwards and in small piles, for 24 hours at normal room temperature.

Keep the temperature unchanged for 72 hours. This ensures flexibility and ease of fitting of the product and minimises the risk of open joints after installation.



Even surface below

TIP Make sure the strips are always placed as flat as possible to avoid distortion before fitting.

If the material is not stored flat, this can lead to problems when fitting it.

Under-floor heating

Avoid using under-floor heating for 24 hours before and 24 hours after laying your new floor. The under-floor heating system must be installed at least 4 weeks before laying the floor covering.



Drying time

Respect the time the floor needs to dry.

Check the Batch number

Check upon delivery and before installation if the batch numbers of the supplied packings are identical. Also examine the boxes for damage or incompleteness of the product.

Colour changes

During the production of design flooring, minimal colour changes are inevitable. Before installation, it is still possible to visually notice the colour differences of the strips.

TIP Mix up the strips from different packings in order to avoid laying similar strips with or without perceptible colour changes next to each other.

Minimal production-related colour changes are to be accepted.

Dimensional stability

Bear in mind that a dimensional deviation of <math><0,25\%</math> can occur with design flooring. The visual perception of joints is an inherent characteristic of the product. Other qualifying factors for open joints are the ambient temperature (e.g. by under-floor heating), the type of surface below, the preparation of the surface below, the type of glue and the installation itself.

PREPARATION OF THE SURFACE BELOW

The type of surface below your flooring, its quality and any pre-treatment required will have a significant influence on the final result of laying your floor. If at first sight, the floor does not seem to be suitable for being covered with design flooring, it must certainly be treated in order to make it suitable anyway. If necessary, an extra levelling surface will have to be applied on top of the existing floor.

TIP To avoid decoloration, damage or unevenness in the floor covering, the underlying surface needs to be clean and flat, dust-free, permanently dry, of normal porosity and free from contaminating products (avoid wood protection products). As a general principle, all types of finished floor need to be planed and levelled beforehand, because the tiniest irregularity in the surface below will show through if you fail to level it off. Your floor is only ready for gluing after this special pre-treatment.

If you are in any doubt about this issue, always consult a specialist in glues and levelling compounds.

Wooden floor

Make sure your floor has no sticking-out nails. Screw down any loose boards. Floorboards and joints need to be smoothed using a levelling compound. Open joints must be filled in.



Concrete floor

Use a levelling product to fill in gaps and cracks in order to obtain an even surface.

The moisture content of a concrete or cement floor must be less than 2.5% before you continue to install the strips. Too high a moisture content makes the concrete expand, too low a value makes it shrink. Make the surface as flat as possible and vacuum or sweep it frequently to get rid of all the dust and dirt.



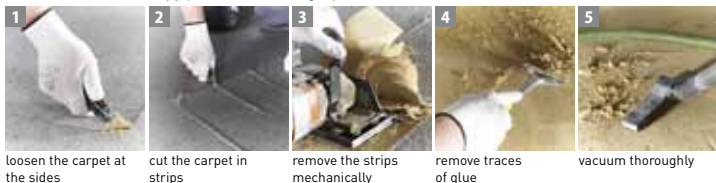
Tiled floor

Use a levelling product to bring the joints up to the same level as the tiles. It is preferable to add an extra levelling layer, allow it to dry, polish it and make sure that you remove all the dust.



Resilient floor

The old textile or soft floor covering such as vinyl, carpet, linoleum or cork needs to be removed along with any traces of glue on the underlying surface. Then it is advisable to apply an extra levelling layer.



Suspended floor

If you use MDF or another suspended surface as your under-floor surface, this must be laid a minimum of 24 hours earlier, before you start fitting and gluing the Moduleo floor. Do not treat pre-treated boards with a primer. Untreated boards to be treated with a primer to prevent the MDF from absorbing the glue. Levelling pre-treatment is not required.

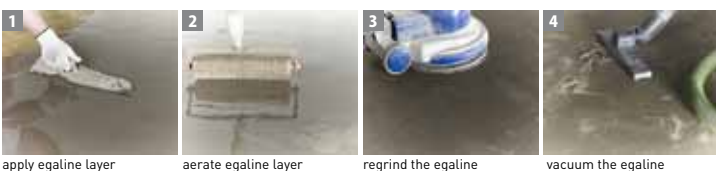
Pre-treatment

Apply a primer layer on each type of under-floor surface with a soft foam or mohair roller. Respect the time needed to dry, as indicated by the primer manufacturer (generally around 30 minutes). The primer provides a better adhesion of the next layer and perfectly fills up the pores in the under-floor surface.



Levelling

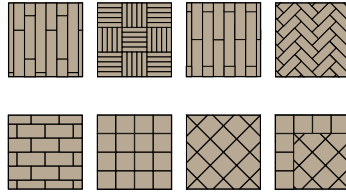
Apply an egaline layer on top of the primer layer. Spread the egaline regularly over the surface. Respect the time to dry as indicated by the egaline manufacturer.



INSTALLATION - ARRANGEMENT

TIP Design flooring is a floor covering in strips, offering unlimited installation possibilities according to its design and dimensions.

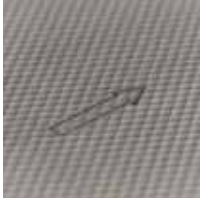
Parallel of diagonal patterns, herringbone pattern, half-stone pattern of a combination of patterns is possible. Always make a diagram first of how you plan to arrange the floor.



INSTALLATION - FIXING

TIP Depending on the dimensions of the product, the size and shape of the room, the strips are to be laid in a pre-defined direction. For this purpose, arrows have been printed in the back layer of the product.

Make sure you are wearing clean footwear during installation of the product.

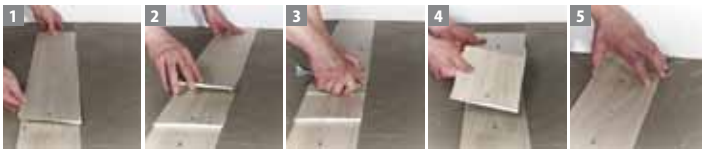


TIP Apply a joint strip:



1 put your joint strip between the tiles
2 cut the strip to the correct length
3 install the tile

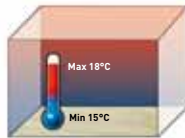
TIP Install final tile against the wall:



1 put a complete board A on top of the board B you've just installed and leave the open area against the wall free
2 put a complete board C on top of board A just against the wall.
3 cut board A along the shortest side of board C
4 break off part A' of board A
5 lay board A' in the opening against the wall and press properly.

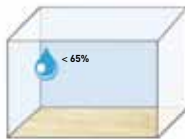
Temperature

The ideal temperature for laying the floor is a room temperature of at least 18°C and a floor temperature of at least 15°C. These conditions must be guaranteed from at least 3 days before starting until 7 days after finishing the installation activities.



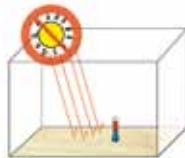
Atmospheric humidity

The relative atmospheric humidity must not be higher than 65% (ideally 40% to 60%). Too low temperatures and/or too high an atmospheric humidity will cause a difficult manipulation and a bad adhesion of the glue.



Sunlight

Avoid direct sunlight during and after laying the product. Also when installing in verandas, the sunlight may heat up the floor surface, causing expansion and lifting-up of the strips.



Glue

We advise you always to use glue that is specifically suitable for PVC. Follow your glue supplier's advice here. We can guarantee you good results with KE66 (Uzin) and Ultrabond Eco V4SP or Eco380 (Mapei).

TIP Apply the glue with the appropriately sized (toothed) glue comb along the perpendicular lines drawn and over the predetermined surface.

Avoid double gluing.

Depending on the temperature and the relative atmospheric humidity, you should lay the floor after an exposure time of 15 to 20 minutes. Whilst drying, avoid moving on the floor to prevent the flooring from shifting.

TIP Any remnants of glue should immediately be removed with a damp cloth: never use detergents for this.



Apply the glue evenly



Laying sides and irregular shapes

TIP It is very easy to cut the strips to size with a craft knife. To obtain perfect results with irregular pieces, it is recommended to cut out the required shape on a paper template first, then transfer it to the strips and finally cut the shapes from the strips.

In damp areas (bathroom, kitchen), the open edge at the sides should be filled in with silicone paste.



TIP Cut out irregular shapes:



1 mark off the irregular shape
2 copy the irregular shape onto the tile/board
3 lay the tile/board

Rolling:

TIP During and immediately after installing the floor, press and roll the flooring tightly. A good pressure stimulates the spreading of the glue and improves the adhesion of the back layer to the glue.



GENERAL MAINTENANCE

The Superguard finishing of the wear layer makes an after-treatment and immediate maintenance after installation superfluous. If after some time the level of dirt becomes too striking, an extra treatment with polymeric dispersion or a PU gloss polish may help.

TIP Your Moduleo floor can be cleaned easily with a normal household brush, vacuum cleaner or damp mop.



Regular maintenance will keep your floor looking good for longer. Always use a non-aggressive maintenance product. Do not pour water on the floor and do not allow puddles of water to remain on the floor.

Maintenance after installation

Clean the floor 48 hours after installation with a neutral cleaning product. Dilute Dr. Schutz CC-PU-cleaner (or similar) with water (1:10), remove the dirty water with brush, mop or wet vacuum cleaner and rinse with clean water. Always use a damp mop, do not pour water on the floor and do not allow puddles of water to remain on the floor.



Daily cleaning & maintenance

Wipe dust and dirt with a mop and duster. Remove persistent dirt with a PU cleaner. If necessary, polish with a white pad. Remove very persistent stains of rubber immediately with e.g. Dr. Schutz Elatex.



Intensive cleaning

Depending on the level of dirt, intensive cleaning will become necessary after a certain time. Use Dr. Schutz Clean and Strip (or a similar product), diluted 1:5 with water. After removal of the dirt, clean the floor with hot water. Always use a damp mop, do not pour water on the floor and do not allow puddles of water to remain on the floor. For large areas, it is recommended to use a cleaning appliance.

Stain removal

To avoid stains, it is recommended to clean up any spillage immediately!

- 1) Ink, tomato, mustard, blood, urine, excrements: let a bleach solution act without rubbing and rinse meticulously afterwards.
- 2) Rust: apply anti-rust product or oxalic acid and rinse meticulously.
- 3) Coarse grease, paint, rubber traces, hair-dye, felt-tip pens or ballpoint ink: clean with White Spirit and rinse meticulously.



Voorzorgen

- TIP** 1) Always fix felt pads to the feet of chairs, tables and cupboards.
2) Protect your flooring and reduce dirt and gravel using floor mats at the entrances of the rooms.
3) Rubber can damage the PVC design flooring irreparably: avoid mats with rubber lining, rubber furniture legs or rubber wheels. Office chairs must be provided with soft wheels (W Type as described in the EN 12529 standard)
4) Dragging heavy household appliances or furniture over the ground without protection may also damage the flooring.
5) Be careful with kitchen appliances, cigarettes, hot or heavy objects that can damage the floor when falling!



Under-floor heating

The design flooring can be installed on floor surfaces with electric or water heating systems. The surface temperature of the top layer must not exceed 27°C. If you make use of other heating systems, ask advice from the manufacturer.



ECOLOGY

All Moduleo products are manufactured using as little energy as possible. They are free from harmful solvents and do not contain any heavy metals. Moduleo is environment-friendly because it is completely recyclable, provides thermal insulation and can be cleaned easily and ecologically too.



GUARANTEE

IVC provides a 10-year guarantee on Moduleo floors. The guarantee applies to manufacturing defects and premature wear in normal residential use. The guarantee is only valid when the official installation and maintenance instructions have been followed. The guarantee is invalid if the current categories of use for this specific type of product have not been observed (residential and light commercial applications). The guarantee does not cover normal wear and tear of the product, installation or maintenance defects, scratches or any other defect of damage caused by the user. Damage caused by sharp objects, inappropriate use of detergents, chemicals and aggressive substances, damage due to abnormal use, cutting into it or burning (cigarettes) are excluded from this guarantee. The guarantee applies to the first purchaser from the first day of purchase and on the condition that the original purchase invoice can be presented. The guarantee provides for replacement of the damage recognised by the manufacturer of the assessor - excluding installation and delivery costs - by a similar product from the same range of products on the day of the complaint, of the same or similar quality.



This version replaces all previous publications.